

Contained Materials
Handling

PL Post Hoist Range

Reaching New Heights

A simple modular Post Hoist designed for the most common IBC unloading applications.

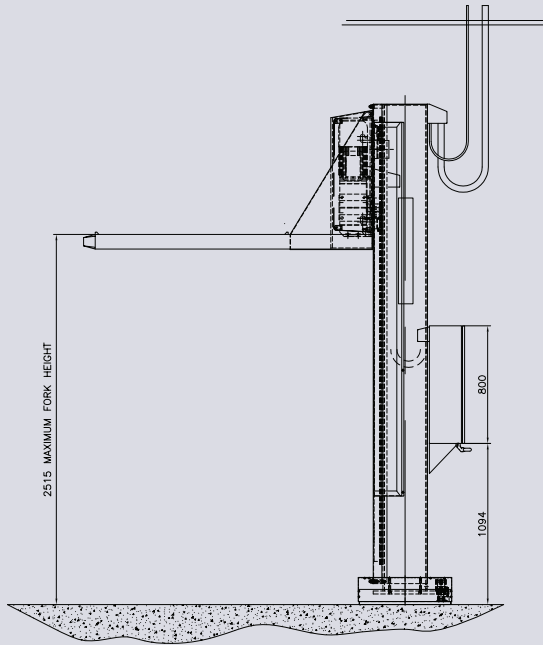
Process options include valve actuation and IBC vibration to minimise operator intervention.

Full GMP design with no hydraulics to suite the demands of Pharmaceutical manufacturing environment.

Fail-safe lifting design.



Buck Systems™

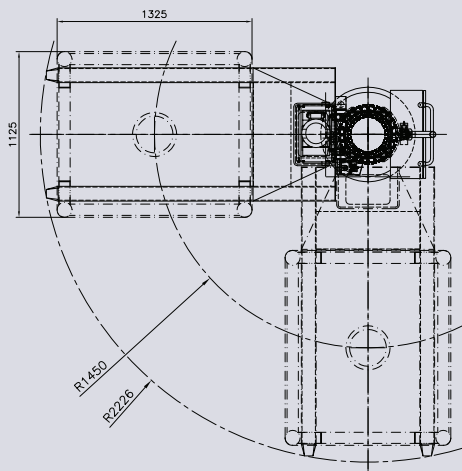


Main features:

- Rack and Pinion drive with bearing rail for extra stable movement
- Monocoque design of lifting forks
 - Reduces materials and weight to increase lifting capacity
 - Provides integral motor cover

Features	PL400	PL900	PL1600
Safe Working Load	400kg	900kg	1600kg
IBC Capability	Buck Systems™ Size 4 IBCs 1125mm x 1325mm footprint		
Lift Speed	4 m/min for fast lifting / lowering 1 m/min for controlled docking		
Standard Column Height	3.4 m	3.4 m	upto 6 m
Fixing	Floor	Floor	Floor & Ceiling
Cable Entry Point	Top of Column		
Control System	Column Mounted Controls with Push Buttons & Pilot Lamps		
Options			
Manual Slew 300° slew angle with pneumatic slew lock	<input type="checkbox"/>	<input type="checkbox"/>	-
Powered Slew 300° angle with position sensors	<input type="checkbox"/>	<input type="checkbox"/>	<input type="checkbox"/>
IBC Outlet Valve (Butterfly Valve) Actuator	<input type="checkbox"/>	<input type="checkbox"/>	<input type="checkbox"/>
IBC External Vibrator with housing pocket on forks	<input type="checkbox"/>	<input type="checkbox"/>	<input type="checkbox"/>
Vibroflow™ motor	<input type="checkbox"/>	<input type="checkbox"/>	<input type="checkbox"/>
Additional Height (upto 6 metres)	<input type="checkbox"/>	<input type="checkbox"/>	<input type="checkbox"/>
Non-standard Pick-up Forks	<input type="checkbox"/>	<input type="checkbox"/>	<input type="checkbox"/>
Utility Data			
Supply Voltage	380-415V 3 Ph 50 Hz 220-240V 3 Ph 60 Hz		
Lift Motor	1.5kW	2.2kW	3.0kW
Pneumatics for Slewing Position Lock	3 L/sec		
Pneumatics for Vibration	10 L/sec		
Pneumatics for Vibration	10 L/sec		
Pneumatics for Butterfly Valve Actuation	3 L/sec		

¹complete with ceiling fixing



© GEA Pharma Systems 2010 Specifications subject to change without notice. All trademarks recognised

www.geapharmasystems.com

GEA Pharma Systems Ltd

Buck Systems™

Wharfdale House, 257 Wharfdale Road, Tyseley,
Birmingham, B11 2DP, United Kingdom

Tel: +44 121 765 5800, Fax: +44 870 622 0923

buck.systems@geagroup.com



GEA Pharma Systems